

Understanding Landscape Cultivars



“**P**erformance” seems like a strange term to use with trees, but that is exactly what is expected when we plant along streets or in parks and yards. Cultivars help deliver what is needed, usually through genetic improvements. Through an understanding of cultivars, trees and planting sites can be better matched, more benefits can be derived from trees, and money can be saved by having a healthier community forest.

from the **TREE CITY USA® BULLETIN**

WHAT CULTIVARS CAN DO

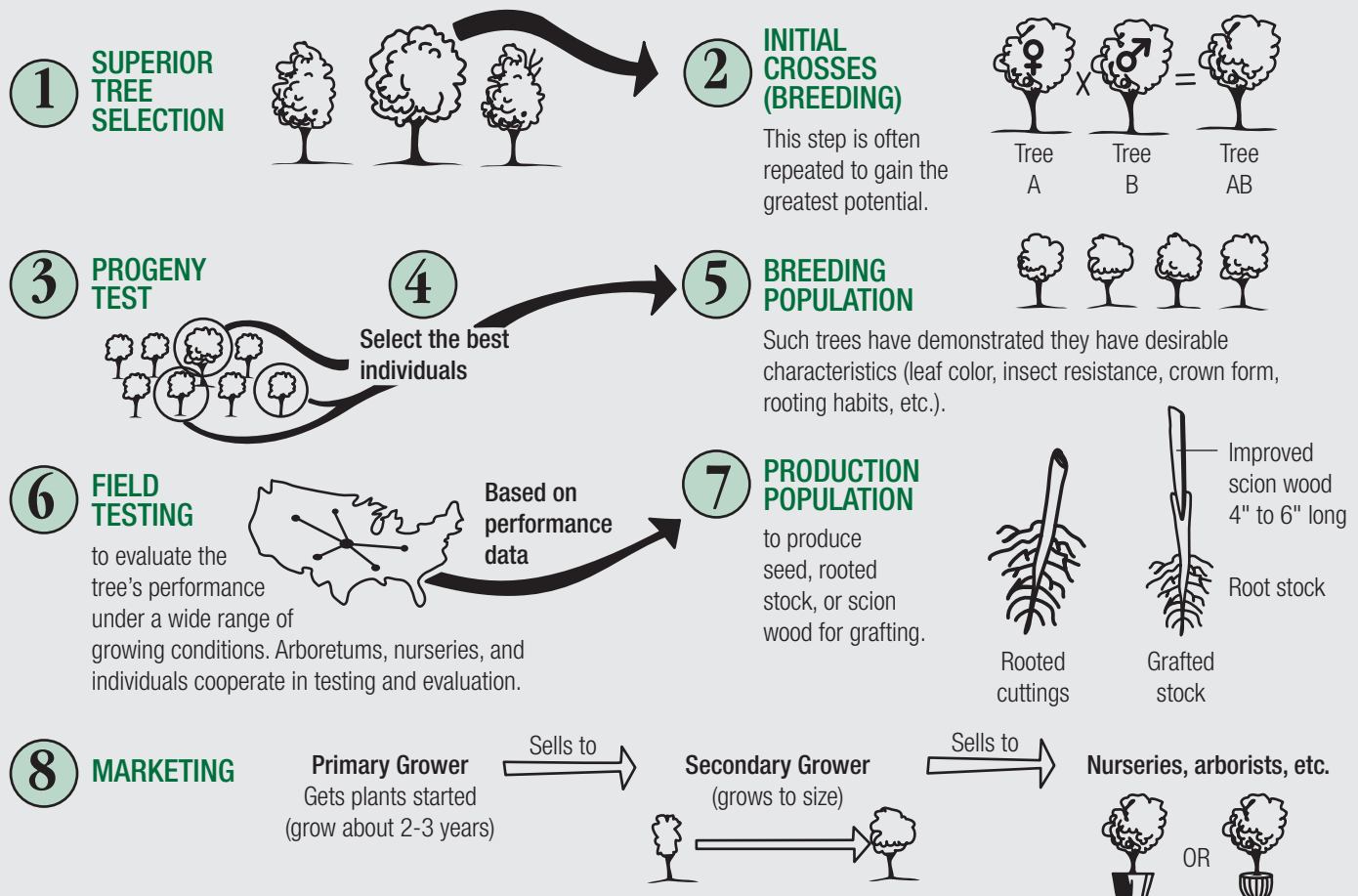
By selecting a cultivar with a trait that can solve a problem, it is possible to:

- Reduce the need for chemical pesticides, thus saving money, reducing environmental impacts, and preventing citizen complaints.
- Reduce maintenance hours, freeing crews to do more productive things like systematic pruning.
- Improve tree health, thereby reducing dead limbs and other public safety risks.
- Predict crown size and root space needs, helping to best match trees to specific sites.
- Enhance aesthetics through more diversity of flowers, foliage, and form — or where desired, through uniformity in plantings.
- Eliminate the nuisance of fruit dropping.
- Reduce removal costs by extending tree life.



THE GENETIC IMPROVEMENT PROCESS

Here is a simplified diagram of the selection and breeding process that taps the power of genetics to develop new cultivars.



Arbor Day Foundation®
100 Arbor Avenue • Nebraska City, NE 68410