



#3902 Tree Cookie Flooring



Assembly Instructions

Please open and inspect all items immediately upon receipt.

If you have any questions or concerns regarding your order, please call the Nature Explore Support Line at 1-888-908-8733 or e-mail us at explore@arborday.org.

Nature Explore® Tree Cookie Flooring #3902

Nature Explore Classroom resources are designed, to bring young children closer to nature and help them develop life-long learning skills. To ensure safety and effectiveness, please be sure to follow the instructions for installation, building codes, warnings, and maintenance. Failure to follow all of the instructions will void any warranty offer. Furthermore, even Nature Explore Classroom resources installed and maintained in accordance with the instructions can present hazards to children in the absence of adequate supervision.

Depending on the location and nature of the outdoor classroom, the supervisors may be paid professionals (full-time park or school/child care facility staff), paid seasonal workers (college or high school students), volunteers (PTA members), or the parents of the children playing in the outdoor classroom. The quality of the supervision depends on the quality of the supervisor's knowledge of safe play behavior. Therefore, supervisors should understand the basics of safety in an outdoor classroom.

Outdoor classroom supervisors should be aware that not all equipment and items are appropriate for all children who may use the outdoor classroom. Posted signs or labels indicating the appropriate age of the users should be checked before play begins, and supervisors should direct children to equipment appropriate for their age. It is also very important to recognize that preschool-age children require more attentive supervision than older children.

Ages: Recommended for all ages

Warnings:



WARNING: Tree Cookie Flooring is NOT to be used as surfacing under and around playground equipment that requires protective surfacing in accordance with ASTM F1292 *Standard Specification for Impact Attenuation of Surface Systems Under and Around Playground Equipment*.



WARNING: Tree Cookie Flooring are ONLY to be used as surfacing under and around equipment that requires a child to be standing or sitting *at ground level*.



WARNING: Installation under and around equipment with elevated play surfaces may result in serious injury or death from falls.

For more information, please refer to the CPSC Handbook for Playground Safety:
<http://www.cpsc.gov/cpsc/pub/pubs/325.pdf>

Building Codes:

Variations in building codes, specific local development covenants, or site conditions may require modification to the installation of the product. Outdoor classroom owners are ultimately responsible for complying with all applicable permits, building codes and other regulatory requirements, and should review their outdoor classroom with local building inspectors. All appropriate building permits should be obtained prior to starting installation.

Liability:

Nature Explore shall have no liability or responsibility for actions or inaction in connection with any Nature Explore item or any damage or liability that arises during the construction and/or use. Always read and observe all safety precautions provided by the Consumer Product Safety Council regarding toy safety, playground safety, and any other applicable programs. Likewise, always read and observe all safety precautions provided by any tool or equipment manufacturer consulted during installation.



Since Nature Explore has no control over surface preparation, application or installation of Tree Cookie Flooring, Nature Explore cannot guarantee the results.

Maintenance:

General Maintenance - Performed every few months. This maintenance will help reduce injuries and extend the life of your Tree Cookie Flooring.

- Sand the tops of the Tree Cookies to remove any splinters.
- Replace joints as needed as per the instructions of the polymeric sand.

Bi-annual maintenance - Performed every other year.

- Protect wood with wood protector (i.e. tung or linseed oil, etc.). Check with local building codes, playground experts, and wood preservation experts for the local rules and regulations and to ask what would be best to use around children.

Inspection:

Inspect the Tree Cookie Flooring before each use.

- Inspect to make sure the surface is stable and has not loosened in the ground.
- No large structurally damaging cracks have started.
- Make sure the Cookies are smooth and splinter free.

Nature Explore® Tree Cookie Flooring Assembly Instructions



Important Information:



Installing Tree Cookie Flooring is similar to installing a brick or flagstone path. If you have no experience in either of these areas, it can be a challenging project. The instructions below are *general* instructions, which should help you create a beautiful area. Please consult with local experts prior to starting.



Read and follow all instructions and guidelines in this document as well as those on the polymeric sand packaging to ensure proper installation. Instructions on polymeric sand should override these instructions.



Nature Explore cannot guarantee size, shape, appearance, dimensions or exact coverage (see Coverage below) of the Tree Cookie Flooring due to the uniqueness of nature and natural products.



Since Nature Explore has no control over surface preparation, application or installation of Tree Cookie Flooring, Nature Explore cannot guarantee the results.

Coverage:

Each set of Tree Cookie Flooring contains 16 – 2.5” Tree Cookies ranging in diameter from 8” to 12”. Coverage area can vary widely between 9 and 19 sq. ft. depending on the shape of the cookies, the shape of the area, and the size of your joints. Depending on the polymeric sand you use, the joints should be between 0.5” and 1”. **Always follow all instructions on the polymeric sand packaging.**

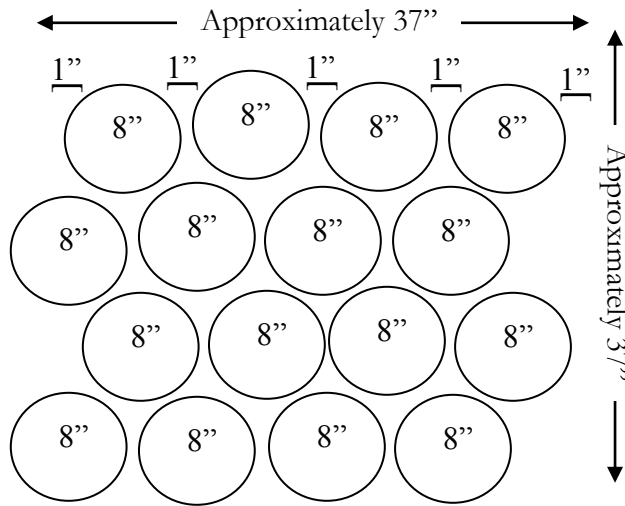
How to estimate how many sets of Tree Cookie Flooring you will need:

1. **Determine Area** (example: 210 sq. ft.)
2. **Add 10%** (example: $210 + (210 \times 10\%) = 231$)
3. **Divide by 10** (assume that each set will cover 10 sq. ft.)

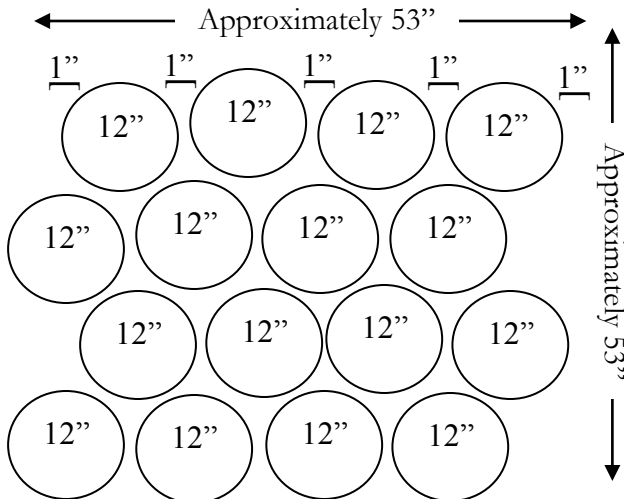
$$\text{Area} + (\text{Area} \times 10\%) / 10 = \# \text{ of Sets of Tree Cookie Flooring}$$

example:

$$210 \text{ sq. ft.} + (210 \times 10\%) / 10 = \mathbf{23.1} \text{ Sets of Tree Cookie Flooring}$$



**16 - 8” dia. Tree Cookies
will cover approximately
9.5 Sq. Ft.**



**16 - 12” dia. Tree Cookies
will cover approximately
19.5 Sq. Ft.**

Tools You May Need:

1. Tamper
2. Spade
3. Shovel
4. Tape measure
5. Broom
6. Hammer or Drill
7. Saw
8. Hose

(more advanced tools will ease and speed installation)

Additional Construction Materials Needed:

1. Spray Paint
2. 2x4 boards (to create frame) or other paver edge restraint
3. Stakes
4. Rope or String
5. Unfiltered Limestone “Crush and Run” or similar sub straight for drainage
6. Concrete Sand (should have same consistency as Limestone base layer)
7. Polymeric Sand Mix
(Nature Explore recommends Techniseal HP Polymeric Sand and uses it as the basis for these instructions)
8. Water

(exact quantities will depend on size of area)

Installation Instructions:



IMPORTANT: Check the weather. Make sure that there is no rain forecasted for 24 hours prior to installation of the polymeric sand and that the temperature will remain above 32°F until the sand is completely dry.

Step 1: Determine size and shape of the Tree Cookie Flooring area you are going to install. Use spray paint to outline the area.

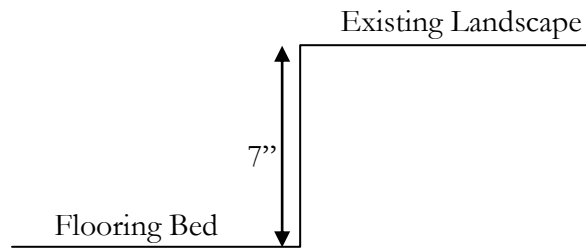
- The most basic shape is a square. More advanced shapes are possible by building additional framework.

Step 2: Once you have determined the area and shape, use stakes to rope off the area.



Be sure you have the utilities marked for excavation before you ever put a shovel into dirt.

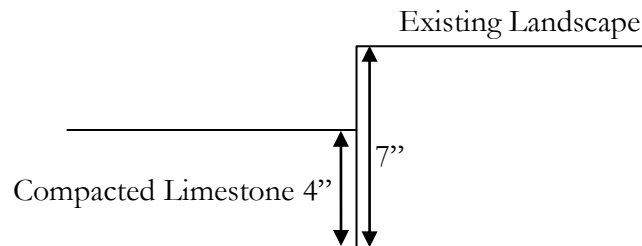
Step 3: Using a spade and shovel, dig out the area until it is minimum 7” below the intended height of the final tree cookie floor. Always try to dig clean 90° edges. (The depth you will need depends on your local environment, i.e. soil type, weather, and drainage. Consult a local contractor if needed.)



Step 4: Level the surface to a uniform depth of 7" below the surrounding surface. To ensure adequate drainage, you should have a slope of at least 1/8" per linear foot (1/4" slope per linear foot is often recommended). Use a Tamper to compact the soil.

Step 5: Fill the bottom of the hole with unfiltered limestone or another drainage sub straight.

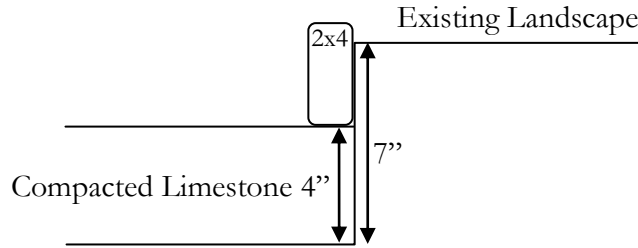
Step 6: Use a tamper to compact the limestone to a uniform depth of 4".



Step 7: To stabilize the area, make a frame around the perimeter with 2x4 boards (actual dimensions 1 1/2" x 3 1/2"). The frame should be made with wood intended to be permanently installed in the ground.

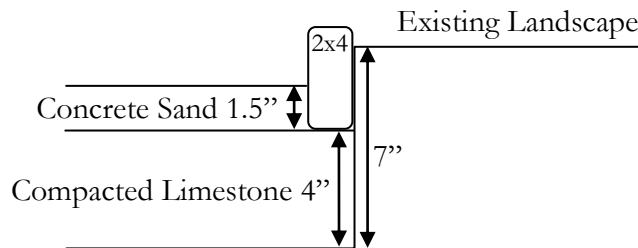
- Please check both local building regulations as well as playground safety regulations to make sure you are using the proper type of wood for your frame.

Step 8: Secure the frame into the ground using stakes. Next, carefully back-fill dirt against the outside edge of the frame, this adds additional support and stability.



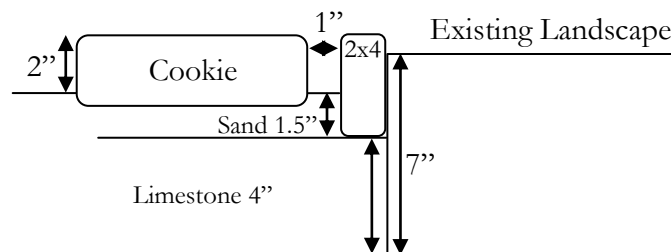
IMPORTANT: The top edges of the 2x4 boards should be slightly above the remainder of the landscape surface to allow for settling and drainage.

Step 9: Add a layer of Concrete Sand to a uniform depth of 1½". Make sure the layer is as level as possible.



You have now ready to begin placing the Tree Cookies.

Step 10: Place first Cookie into the sand, pushing it about ½" into the sand. This should leave about a 2" gap between the sand and the top of the tree cookies, this space will be used for the polymeric sand.

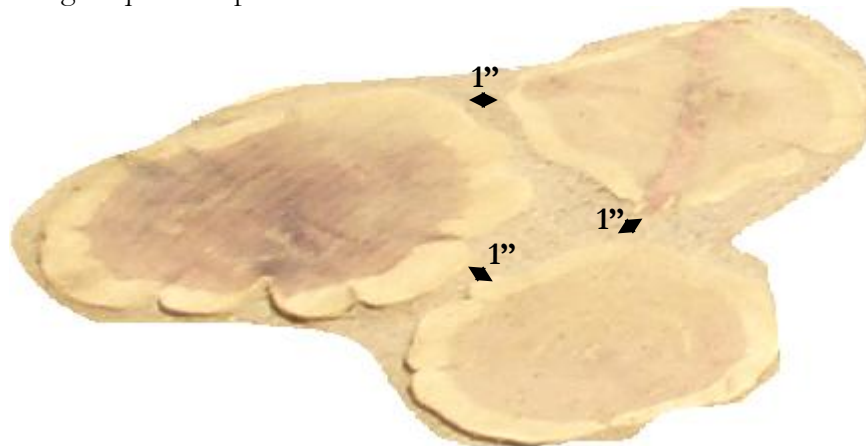


Step 11: Place second cookie a distance of no more than 1" apart from the first cookie.

- Once again, make sure the top of the tree cookie is about 2" above the sand level and is level with the first cookie.



Step 12: Place the third cookie no more than 1" from the first and second cookies, start forming a square shape.



- Once again, make sure the top of the tree cookie is about 2" above the sand level and is level with the first cookie.

Step 13: Repeat Step 12 until you have filled the entire frame with cookies. Placing each cookie no more than 1" from the other cookies, continue following the square pattern, making sure the tops of each tree cookie is about 2" above the sand level and all cookies are level with each other.



You have now finished laying tree cookies into frame



IMPORTANT: Check the weather. Make sure that there is no rain forecasted for 24 hours prior to installation of the polymeric sand and that the temperature will remain above 32°F until the sand is completely dry.



IMPORTANT: Follow all directions on the packaging of the polymeric sand you are using.

Step 14: Make sure all Tree Cookies are firmly compacted into the sand layer and that the Tree Cookie Flooring surface is completely dry.

Step 15: Spread polymeric sand mix uniformly over the surface. Use a push broom, use short strokes to sweep the polymeric sand into the joints, filling them completely, to 1/8" below tops of the cookies.

- Sweeping over long distances can compromise the integrity of the mix.

Cookie

Cookie



Step 16: Manually compact the cookies to eliminate any remaining voids to ensure a dense and solid joint.

Step 17: Sweep all loose sand and polymeric sand mix from tops of cookies. Failure to do so will result in a rough play surface.

Step 18: Gently and lightly mist the polymeric mix as directed. Use a very fine and continuous mist that does not displace the polymeric sand.

- Avoid flooding area and causing run-off. If you see white foam on the pavers you have added the water too fast.
- Using a small screwdriver, verify the progress of the wetness in several areas by emptying a small portion of the joint.
- **Stop** watering once the joints are moistened 1.5” deep.



IMPORTANT: Too much water will cause the binding agent to run off and prevent the sand from solidifying



Step 19: Polymeric sand must dry completely after initial wetting to ensure a solid joint and long-term stability.

- Read instructions on polymeric sand mix you are using, drying time should be between 12 and 48 hours depending on brand and weather conditions.
- If there is potential for the surface to be exposed to water before it is completely dry, protect the area with a tarp. Remove the tarp as soon as the risk has passed.

You have now completed your Tree Cookie Flooring.

Joint Replacement:

Step 1: Empty the old joint. Use a pressure washer to empty joints completely.

Step 2: Install new polymeric as directed.